

DUBAI CREEK

HARBOUR

CREEK CRESCENT

FLOOR PLANS



EMAAR

DUBAI CREEK
HARBOUR

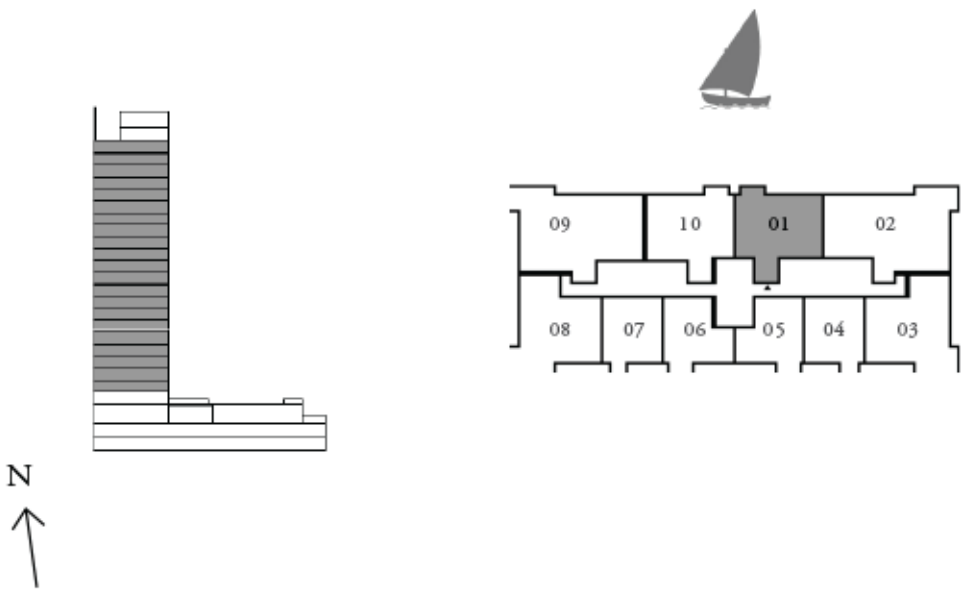
CREEK CRESCENT

APARTMENT

2 BEDROOM

UNIT 01 | LEVELS 02-22

SUITE AREA	1000.07 SQ.FT.	92.91 SQ.M.
BALCONY AREA	57.05 SQ.FT.	5.30 SQ.M.
TOTAL AREA	1057.12 SQ.FT.	98.21 SQ.M.



DUBAI CREEK
HARBOUR

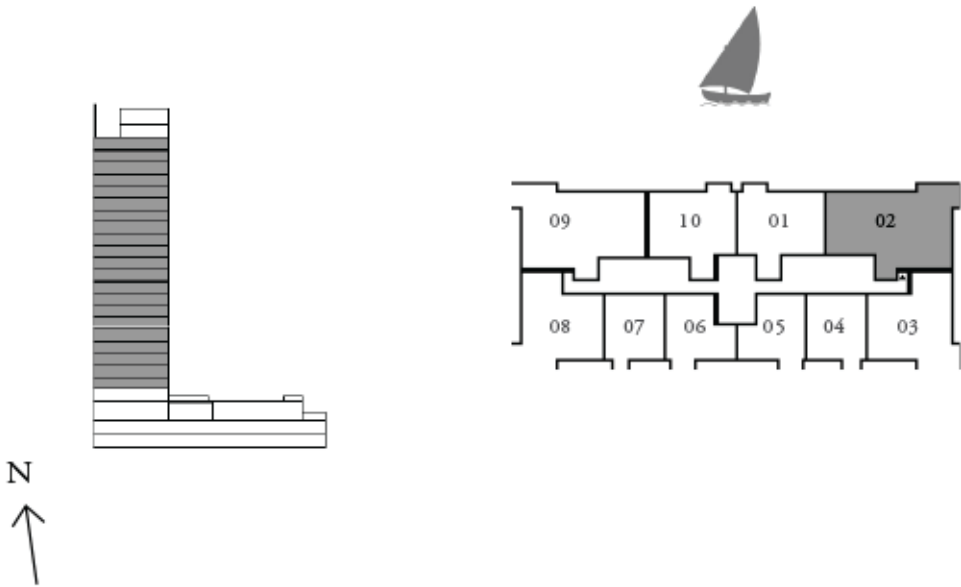
CREEK CRESCENT

APARTMENT

3 BEDROOM

UNIT 02 | LEVELS 02-22

SUITE AREA	1445.49 SQ.FT.	134.29 SQ.M.
BALCONY AREA	131.64 SQ.FT.	12.23 SQ.M.
TOTAL AREA	1577.13 SQ.FT.	146.52 SQ.M.



LOOR PLAN 1. All dimensions are in imperial and metric, and measured from finish to finish excluding construction tolerances. 2. All materials, dimensions, and drawings are approximate only. 3. Information is subject to change without notice, at developer's
olute discretion. 4. Actual area may vary from the stated area. 5. Drawings not to scale. 6. All images used are for illustrative purposes only and do not represent the actual size, features, specifications, fittings, and furnishings. 7. The developer reserves the right
make revisions / alterations, at it's absolute discretion, without any liability whatsoever.

DUBAI CREEK
HARBOUR

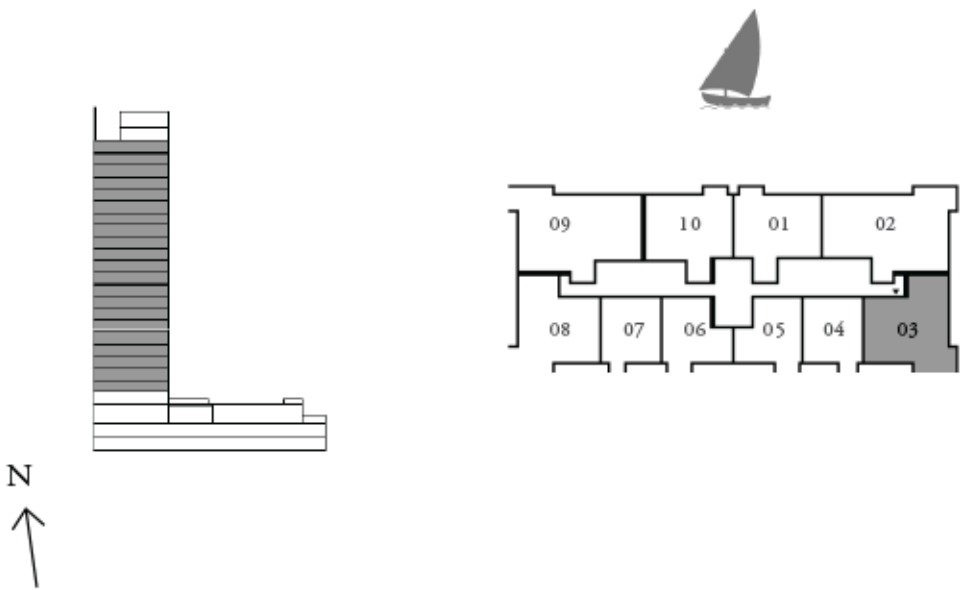
CREEK CRESCENT

APARTMENT

2 BEDROOM

UNIT 03 | LEVELS 02-22

SUITE AREA	996.52 SQ.FT.	92.58 SQ.M.
BALCONY AREA	132.93 SQ.FT.	12.35 SQ.M.
TOTAL AREA	1129.45 SQ.FT.	104.93 SQ.M.



DUBAI CREEK
HARBOUR

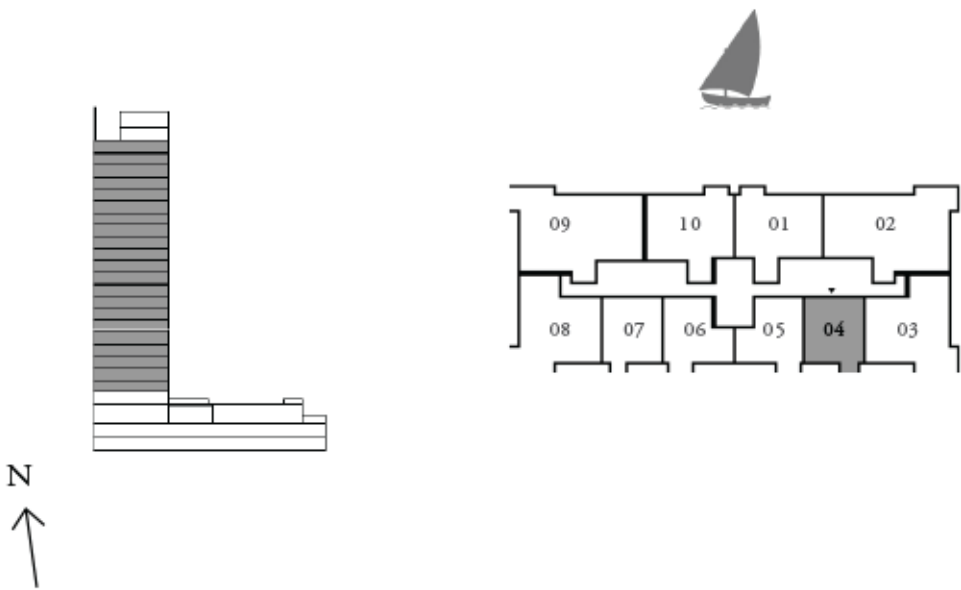
CREEK CRESCENT

APARTMENT

1 BEDROOM

UNIT 04 | LEVELS 02-22

SUITE AREA	622.26 SQ.FT.	57.81 SQ.M.
BALCONY AREA	41.66 SQ.FT.	3.87 SQ.M.
TOTAL AREA	663.92 SQ.FT.	61.68 SQ.M.



LOOR PLAN 1. All dimensions are in imperial and metric, and measured from finish to finish excluding construction tolerances. 2. All materials, dimensions, and drawings are approximate only. 3. Information is subject to change without notice, at developer's
olute discretion. 4. Actual area may vary from the stated area. 5. Drawings not to scale. 6. All images used are for illustrative purposes only and do not represent the actual size, features, specifications, fittings, and furnishings. 7. The developer reserves the right
make revisions / alterations, at it's absolute discretion, without any liability whatsoever.

DUBAI CREEK
HARBOUR

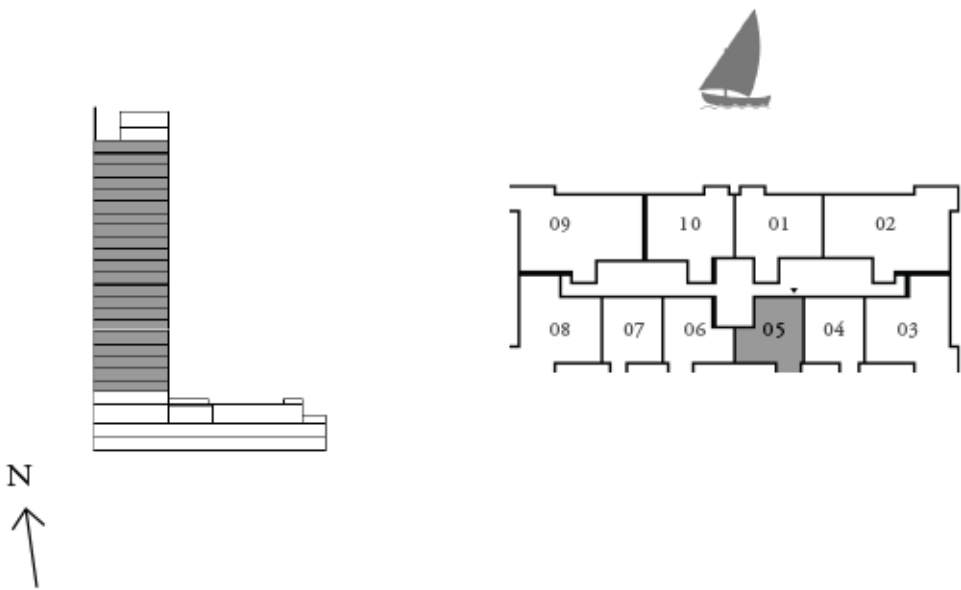
CREEK CRESCENT

APARTMENT

1 BEDROOM

UNIT 05 | LEVELS 02-22

SUITE AREA	627.11 SQ.FT.	58.26 SQ.M.
BALCONY AREA	57.05 SQ.FT.	5.30 SQ.M.
TOTAL AREA	684.16 SQ.FT.	63.56 SQ.M.



LOOR PLAN 1. All dimensions are in imperial and metric, and measured from finish to finish excluding construction tolerances. 2. All materials, dimensions, and drawings are approximate only. 3. Information is subject to change without notice, at developer's absolute discretion. 4. Actual area may vary from the stated area. 5. Drawings not to scale. 6. All images used are for illustrative purposes only and do not represent the actual size, features, specifications, fittings, and furnishings. 7. The developer reserves the right to make revisions / alterations, at it's absolute discretion, without any liability whatsoever.

DUBAI CREEK
HARBOUR

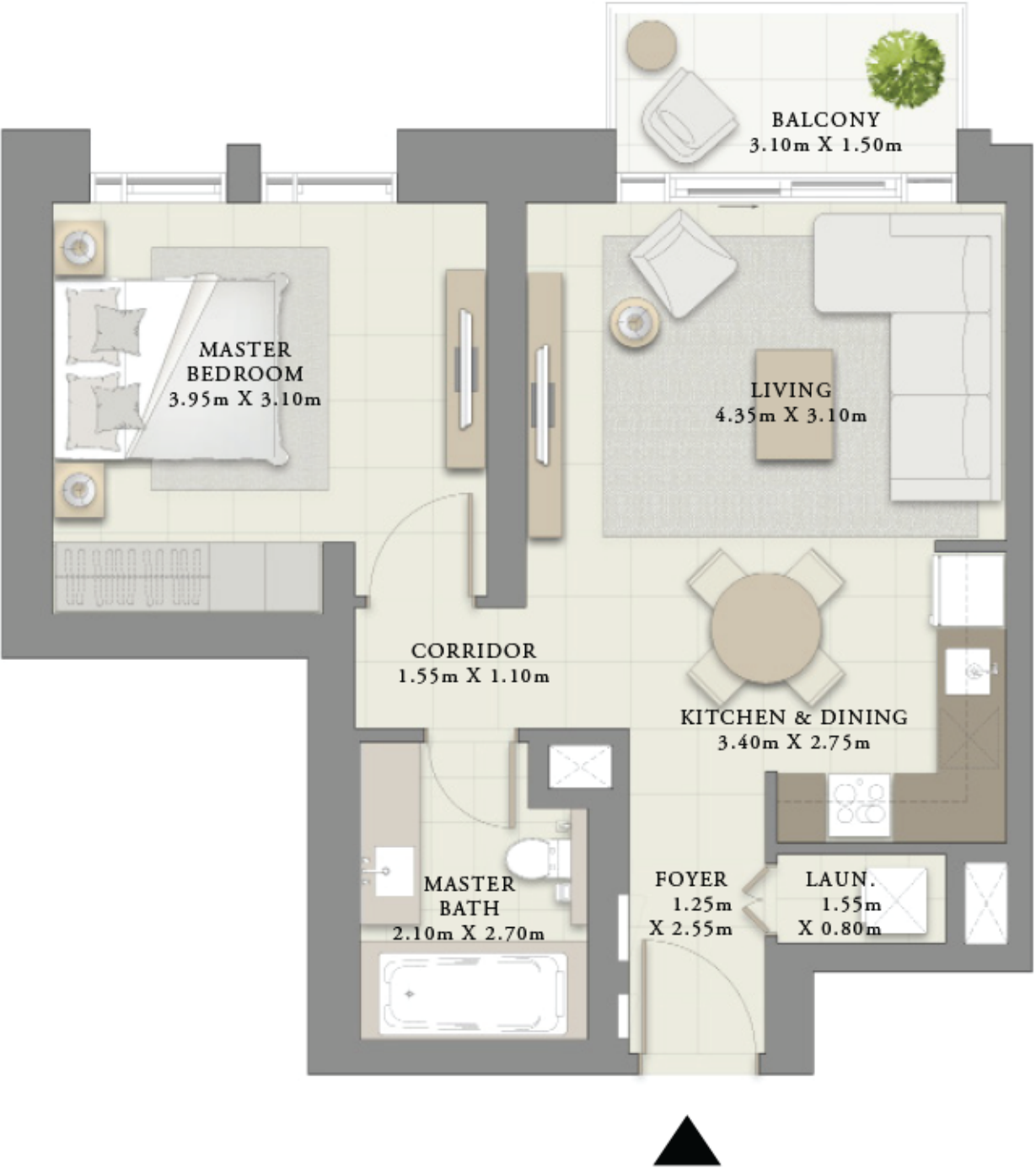
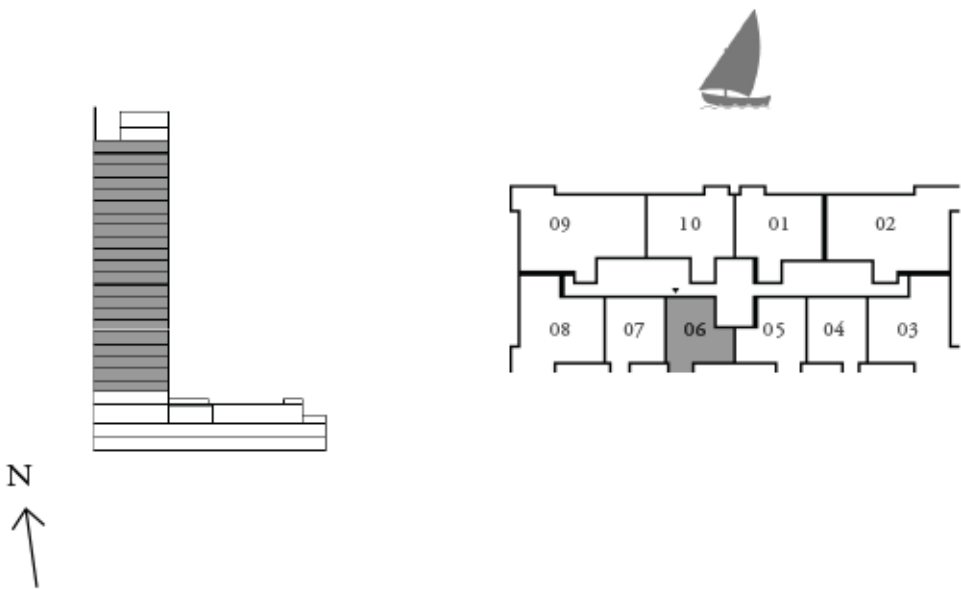
CREEK CRESCENT

APARTMENT

1 BEDROOM

UNIT 06 | LEVELS 02-22

SUITE AREA	627.11 SQ.FT.	58.26 SQ.M.
BALCONY AREA	57.05 SQ.FT.	5.30 SQ.M.
TOTAL AREA	684.16 SQ.FT.	63.56 SQ.M.



LOOR PLAN 1. All dimensions are in imperial and metric, and measured from finish to finish excluding construction tolerances. 2. All materials, dimensions, and drawings are approximate only. 3. Information is subject to change without notice, at developer's absolute discretion. 4. Actual area may vary from the stated area. 5. Drawings not to scale. 6. All images used are for illustrative purposes only and do not represent the actual size, features, specifications, fittings, and furnishings. 7. The developer reserves the right to make revisions / alterations, at it's absolute discretion, without any liability whatsoever.

DUBAI CREEK
HARBOUR

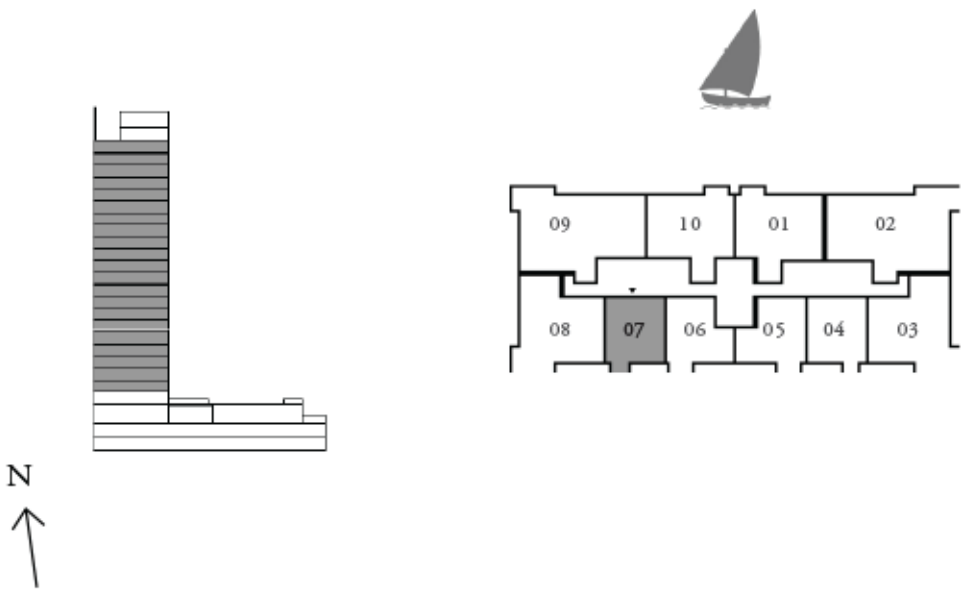
CREEK CRESCENT

APARTMENT

1 BEDROOM

UNIT 07 | LEVELS 02-22

SUITE AREA	622.26 SQ.FT.	57.81 SQ.M.
BALCONY AREA	41.66 SQ.FT.	3.87 SQ.M.
TOTAL AREA	663.92 SQ.FT.	61.68 SQ.M.



LOOR PLAN 1. All dimensions are in imperial and metric, and measured from finish to finish excluding construction tolerances. 2. All materials, dimensions, and drawings are approximate only. 3. Information is subject to change without notice, at developer's absolute discretion. 4. Actual area may vary from the stated area. 5. Drawings not to scale. 6. All images used are for illustrative purposes only and do not represent the actual size, features, specifications, fittings, and furnishings. 7. The developer reserves the right to make revisions / alterations, at it's absolute discretion, without any liability whatsoever.

DUBAI CREEK
HARBOUR

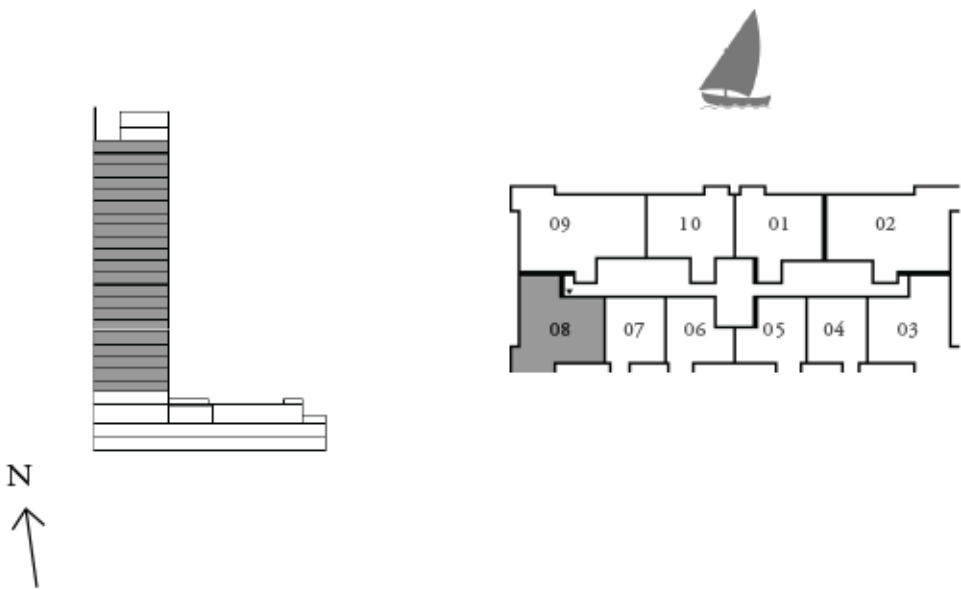
CREEK CRESCENT

APARTMENT

2 BEDROOM

UNIT 08 | LEVELS 02-22

SUITE AREA	996.52 SQ.FT.	92.58 SQ.M.
BALCONY AREA	132.93 SQ.FT.	12.35 SQ.M.
TOTAL AREA	1129.45 SQ.FT.	104.93 SQ.M.



LOOR PLAN 1. All dimensions are in imperial and metric, and measured from finish to finish excluding construction tolerances. 2. All materials, dimensions, and drawings are approximate only. 3. Information is subject to change without notice, at developer's absolute discretion. 4. Actual area may vary from the stated area. 5. Drawings not to scale. 6. All images used are for illustrative purposes only and do not represent the actual size, features, specifications, fittings, and furnishings. 7. The developer reserves the right to make revisions / alterations, at it's absolute discretion, without any liability whatsoever.

DUBAI CREEK
HARBOUR

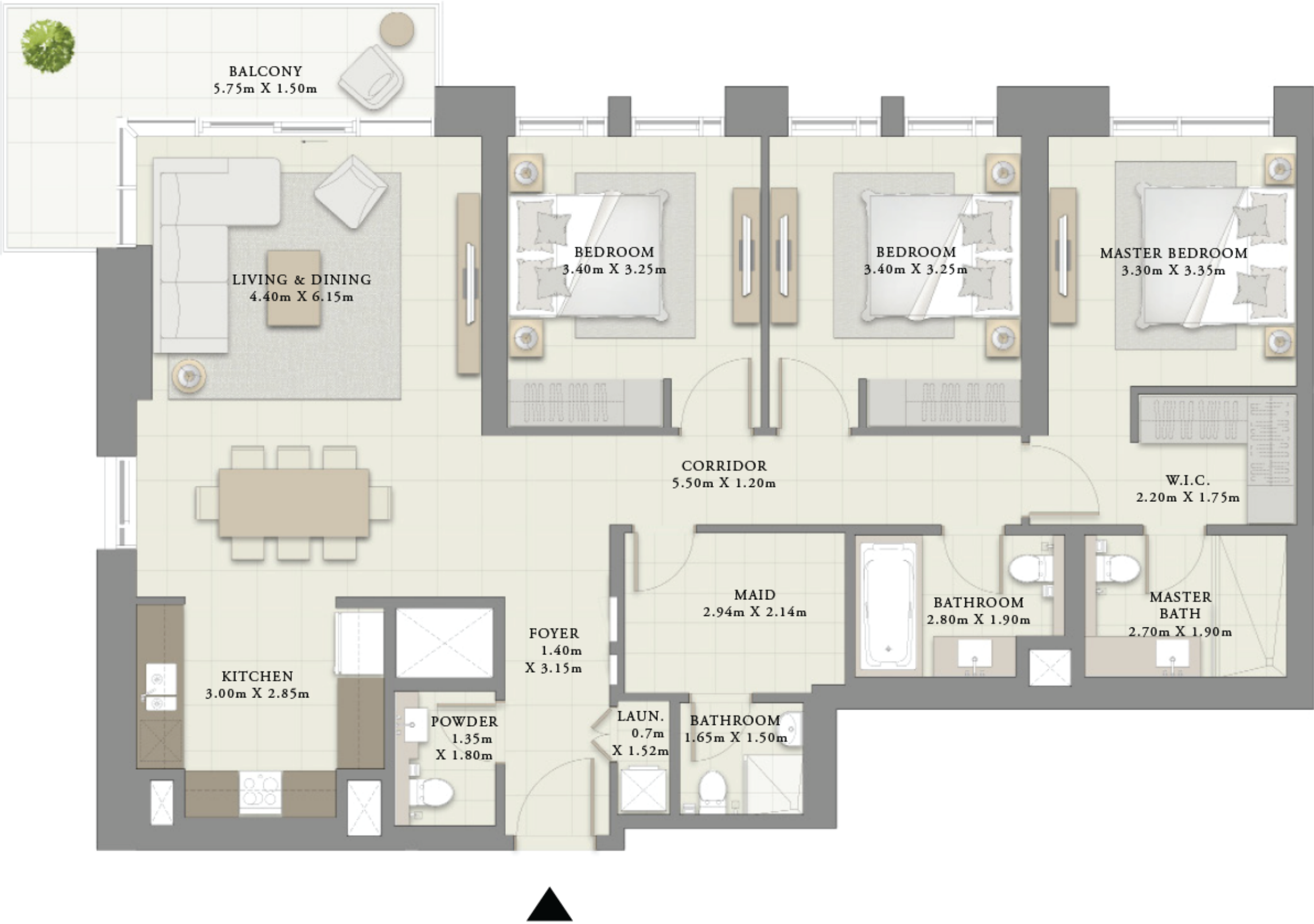
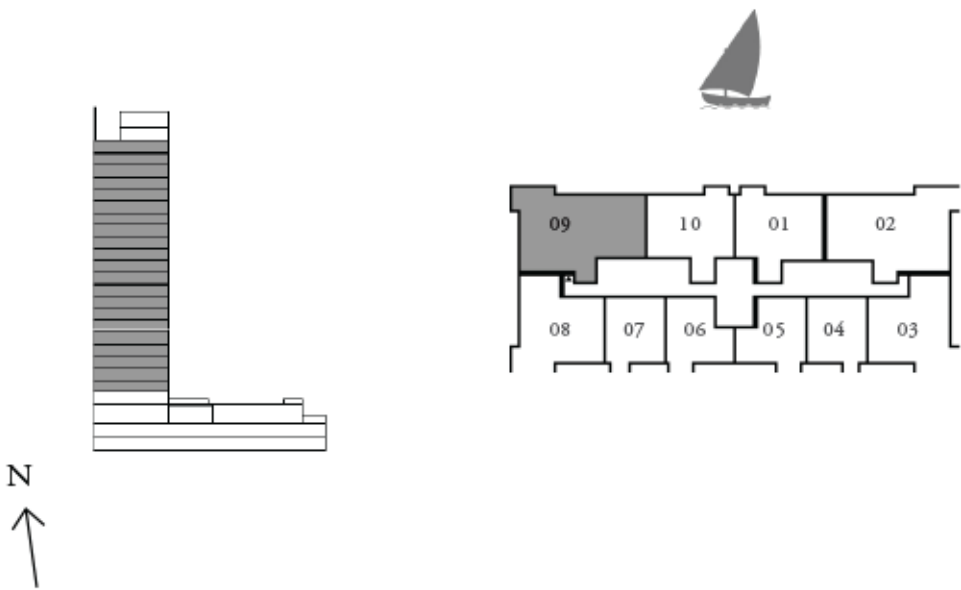
CREEK CRESCENT

APARTMENT

3 BEDROOM

UNIT 09 | LEVELS 02-22

SUITE AREA	1445.16 SQ.FT.	134.26 SQ.M.
BALCONY AREA	131.64 SQ.FT.	12.23 SQ.M.
TOTAL AREA	1576.80 SQ.FT.	146.49 SQ.M.



LOOR PLAN 1. All dimensions are in imperial and metric, and measured from finish to finish excluding construction tolerances. 2. All materials, dimensions, and drawings are approximate only. 3. Information is subject to change without notice, at developer's absolute discretion. 4. Actual area may vary from the stated area. 5. Drawings not to scale. 6. All images used are for illustrative purposes only and do not represent the actual size, features, specifications, fittings, and furnishings. 7. The developer reserves the right to make revisions / alterations, at it's absolute discretion, without any liability whatsoever.

DUBAI CREEK
HARBOUR

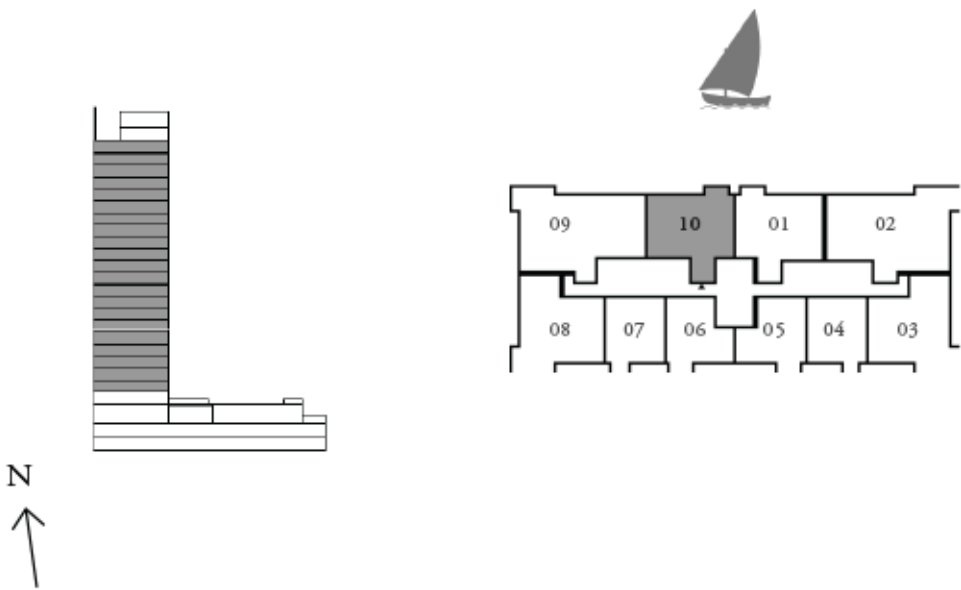
CREEK CRESCENT

APARTMENT

2 BEDROOM

UNIT 10 | LEVELS 02-22

SUITE AREA	1000.07 SQ.FT.	92.91 SQ.M.
BALCONY AREA	57.05 SQ.FT.	5.30 SQ.M.
TOTAL AREA	1057.12 SQ.FT.	98.21 SQ.M.



LOOR PLAN 1. All dimensions are in imperial and metric, and measured from finish to finish excluding construction tolerances. 2. All materials, dimensions, and drawings are approximate only. 3. Information is subject to change without notice, at developer's absolute discretion. 4. Actual area may vary from the stated area. 5. Drawings not to scale. 6. All images used are for illustrative purposes only and do not represent the actual size, features, specifications, fittings, and furnishings. 7. The developer reserves the right to make revisions / alterations, at it's absolute discretion, without any liability whatsoever.

DUBAI CREEK
HARBOUR

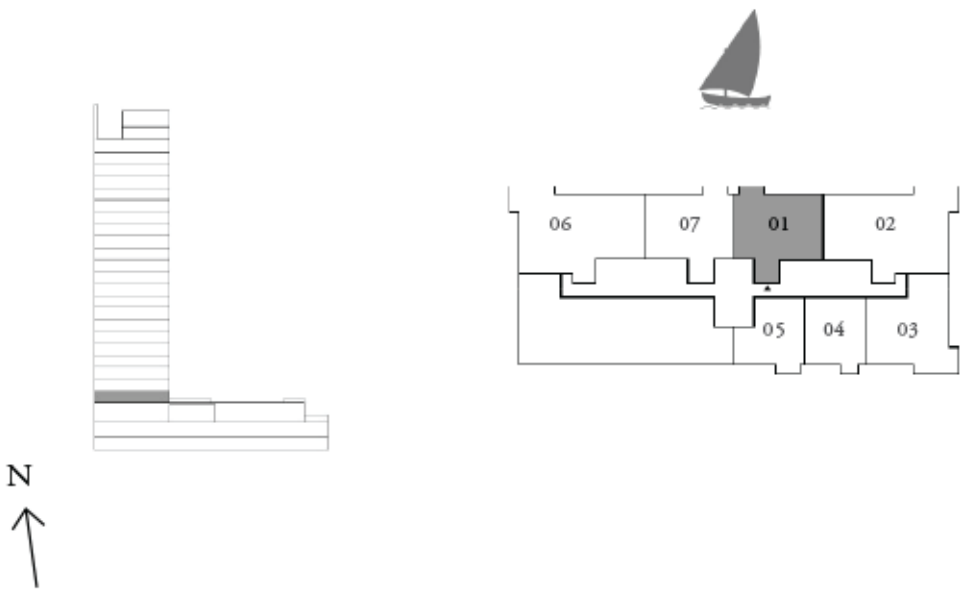
CREEK CRESCENT

APARTMENT

2 BEDROOM

UNIT 01 | LEVEL 01

SUITE AREA	1000.07 SQ.FT.	92.91 SQ.M.
BALCONY AREA	57.05 SQ.FT.	5.30 SQ.M.
TOTAL AREA	1057.12 SQ.FT.	98.21 SQ.M.



DUBAI CREEK
HARBOUR

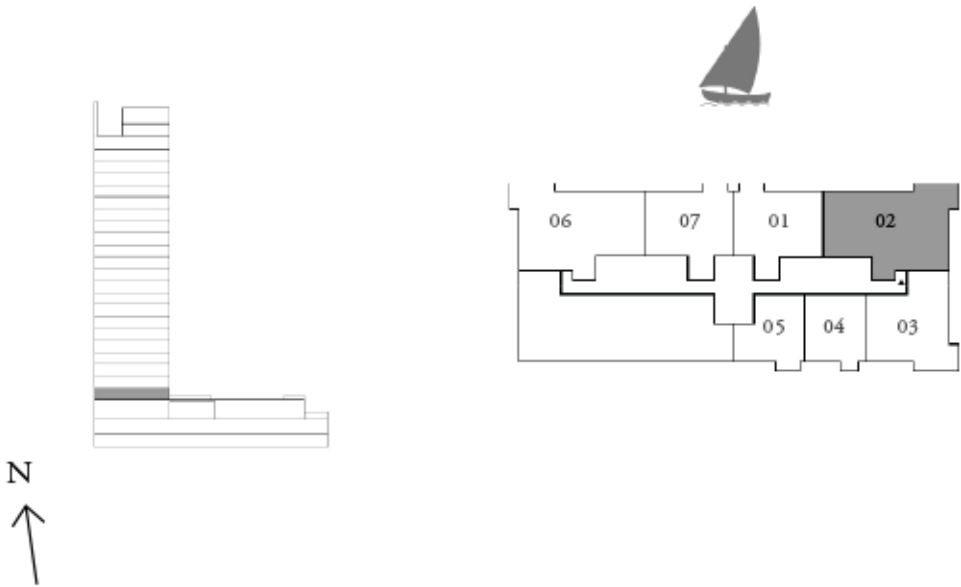
CREEK CRESCENT

APARTMENT

3 BEDROOM

UNIT 02 | LEVEL 01

SUITE AREA	1445.49 SQ.FT.	134.29 SQ.M.
BALCONY AREA	131.64 SQ.FT.	12.23 SQ.M.
TOTAL AREA	1577.13 SQ.FT.	146.52 SQ.M.



LOOR PLAN 1. All dimensions are in imperial and metric, and measured from finish to finish excluding construction tolerances. 2. All materials, dimensions, and drawings are approximate only. 3. Information is subject to change without notice, at developer's
olute discretion. 4. Actual area may vary from the stated area. 5. Drawings not to scale. 6. All images used are for illustrative purposes only and do not represent the actual size, features, specifications, fittings, and furnishings. 7. The developer reserves the right
make revisions / alterations, at it's absolute discretion, without any liability whatsoever.

DUBAI CREEK
HARBOUR

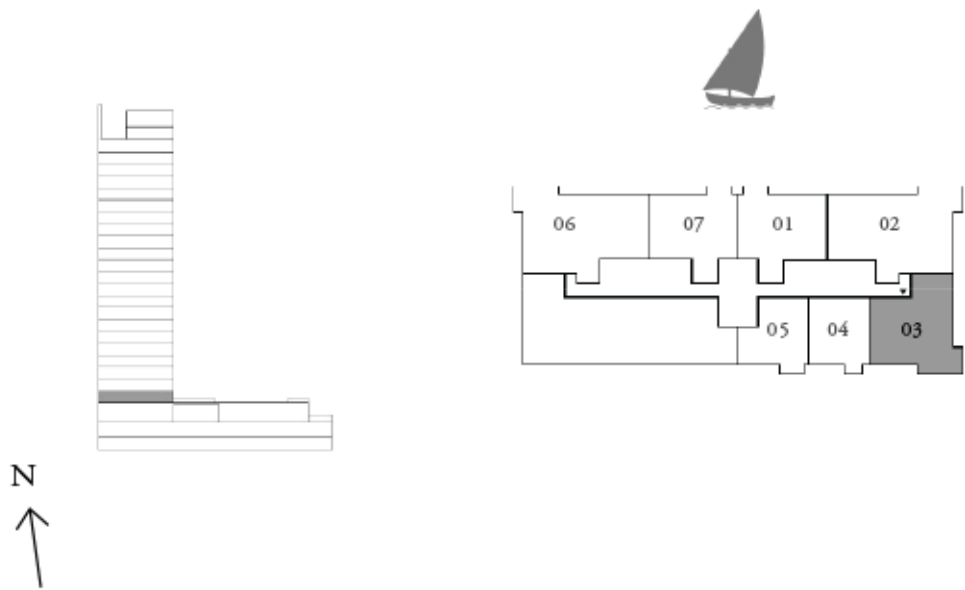
CREEK CRESCENT

APARTMENT

2 BEDROOM

UNIT 03 | LEVEL 01

SUITE AREA	996.52 SQ.FT.	92.58 SQ.M.
BALCONY AREA	132.93 SQ.FT.	12.35 SQ.M.
TOTAL AREA	1129.45 SQ.FT.	104.93 SQ.M.



LOOR PLAN 1. All dimensions are in imperial and metric, and measured from finish to finish excluding construction tolerances. 2. All materials, dimensions, and drawings are approximate only. 3. Information is subject to change without notice, at developer's absolute discretion. 4. Actual area may vary from the stated area. 5. Drawings not to scale. 6. All images used are for illustrative purposes only and do not represent the actual size, features, specifications, fittings, and furnishings. 7. The developer reserves the right to make revisions / alterations, at it's absolute discretion, without any liability whatsoever.

DUBAI CREEK
HARBOUR

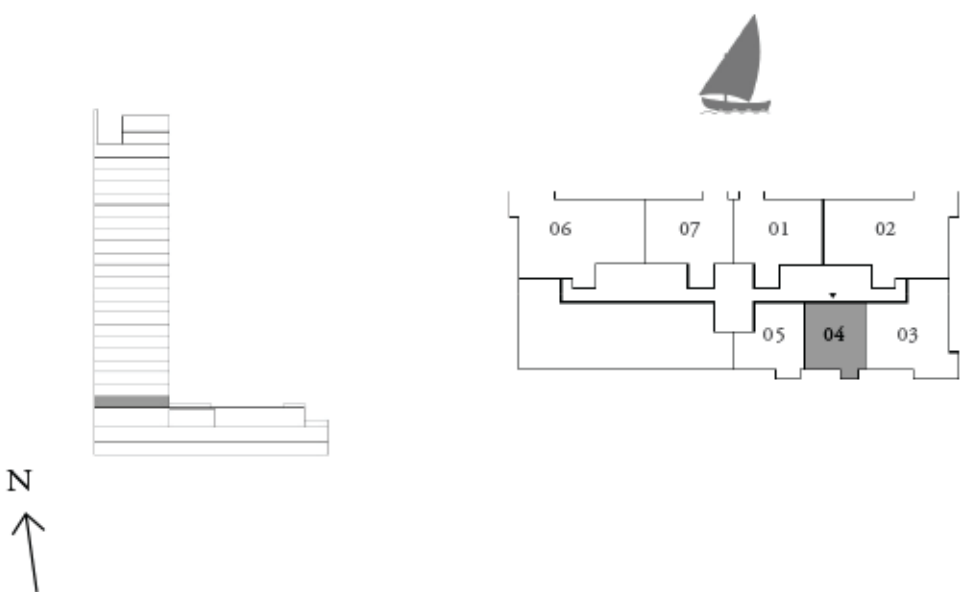
CREEK CRESCENT

APARTMENT

1 BEDROOM

UNIT 04 | LEVEL 01

SUITE AREA	622.26 SQ.FT.	57.81 SQ.M.
BALCONY AREA	41.66 SQ.FT.	3.87 SQ.M.
TOTAL AREA	663.92 SQ.FT.	61.68 SQ.M.



LOOR PLAN 1. All dimensions are in imperial and metric, and measured from finish to finish excluding construction tolerances. 2. All materials, dimensions, and drawings are approximate only. 3. Information is subject to change without notice, at developer's absolute discretion. 4. Actual area may vary from the stated area. 5. Drawings not to scale. 6. All images used are for illustrative purposes only and do not represent the actual size, features, specifications, fittings, and furnishings. 7. The developer reserves the right to make revisions / alterations, at it's absolute discretion, without any liability whatsoever.

DUBAI CREEK
HARBOUR

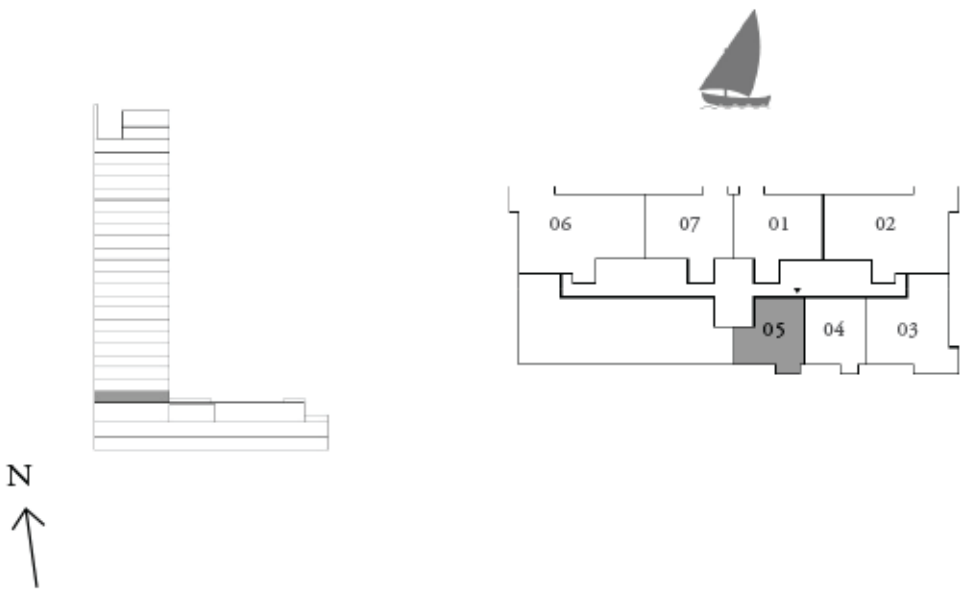
CREEK CRESCENT

APARTMENT

1 BEDROOM

UNIT 05 | LEVEL 01

SUITE AREA	627.11 SQ.FT.	58.26 SQ.M.
BALCONY AREA	57.05 SQ.FT.	5.30 SQ.M.
TOTAL AREA	684.16 SQ.FT.	63.56 SQ.M.



LOOR PLAN 1. All dimensions are in imperial and metric, and measured from finish to finish excluding construction tolerances. 2. All materials, dimensions, and drawings are approximate only. 3. Information is subject to change without notice, at developer's absolute discretion. 4. Actual area may vary from the stated area. 5. Drawings not to scale. 6. All images used are for illustrative purposes only and do not represent the actual size, features, specifications, fittings, and furnishings. 7. The developer reserves the right to make revisions / alterations, at it's absolute discretion, without any liability whatsoever.

DUBAI CREEK
HARBOUR

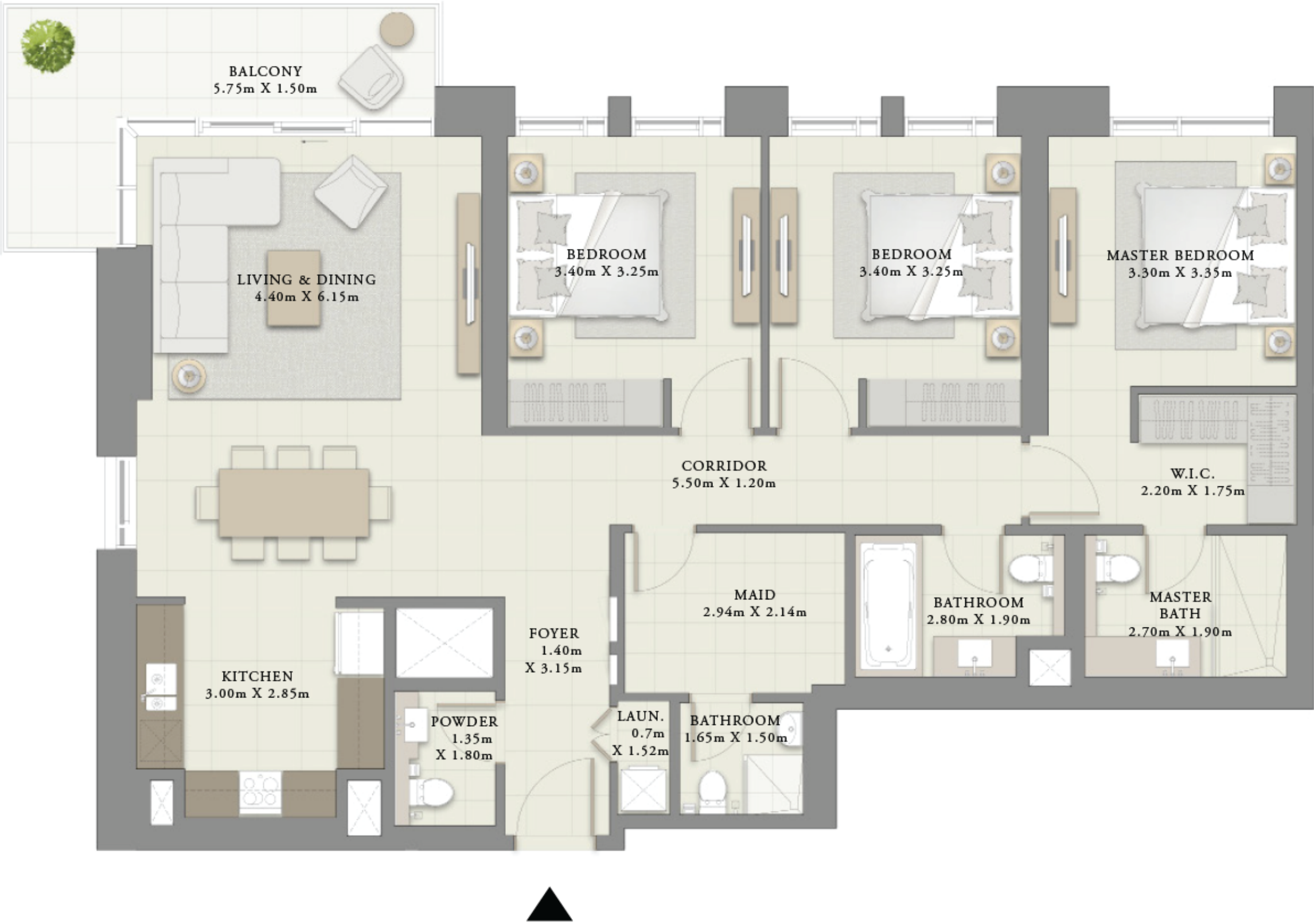
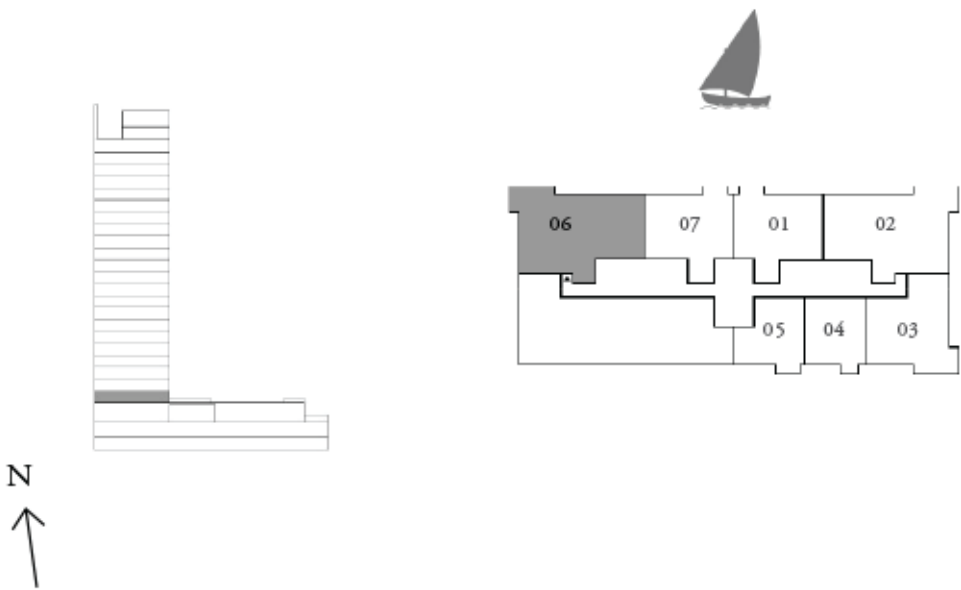
CREEK CRESCENT

APARTMENT

3 BEDROOM

UNIT 06 | LEVEL 01

SUITE AREA	1445.16 SQ.FT.	134.26 SQ.M.
BALCONY AREA	131.64 SQ.FT.	12.23 SQ.M.
TOTAL AREA	1576.80 SQ.FT.	146.49 SQ.M.



LOOR PLAN 1. All dimensions are in imperial and metric, and measured from finish to finish excluding construction tolerances. 2. All materials, dimensions, and drawings are approximate only. 3. Information is subject to change without notice, at developer's absolute discretion. 4. Actual area may vary from the stated area. 5. Drawings not to scale. 6. All images used are for illustrative purposes only and do not represent the actual size, features, specifications, fittings, and furnishings. 7. The developer reserves the right to make revisions / alterations, at it's absolute discretion, without any liability whatsoever.

DUBAI CREEK
HARBOUR

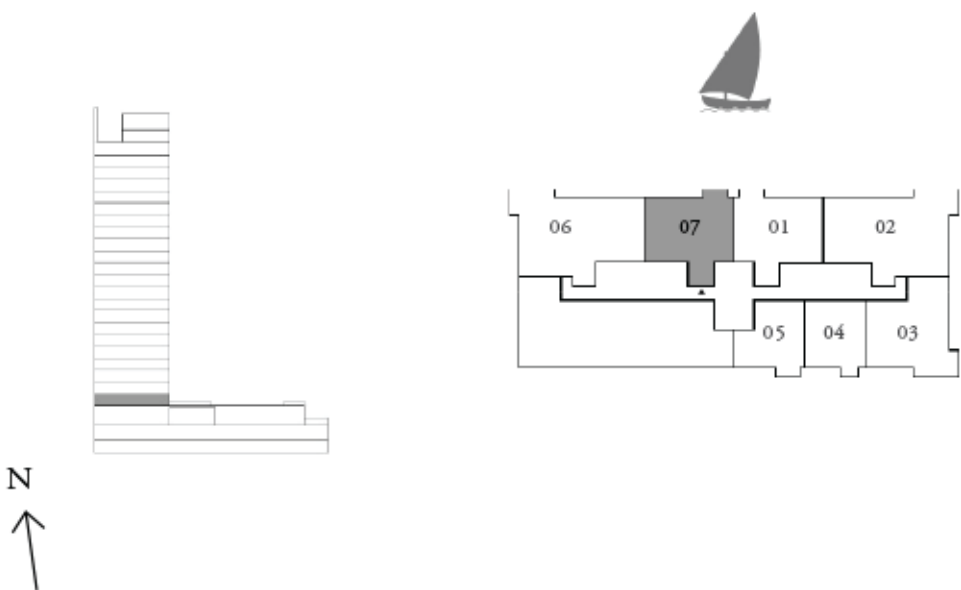
CREEK CRESCENT

APARTMENT

2 BEDROOM

UNIT 07 | LEVEL 01

SUITE AREA	1000.07 SQ.FT.	92.91 SQ.M.
BALCONY AREA	57.05 SQ.FT.	5.30 SQ.M.
TOTAL AREA	1057.12 SQ.FT.	98.21 SQ.M.



FOOR PLAN 1. All dimensions are in imperial and metric, and measured from finish to finish excluding construction tolerances. 2. All materials, dimensions, and drawings are approximate only. 3. Information is subject to change without notice, at developer's absolute discretion. 4. Actual area may vary from the stated area. 5. Drawings not to scale. 6. All images used are for illustrative purposes only and do not represent the actual size, features, specifications, fittings, and furnishings. 7. The developer reserves the right to make revisions / alterations, at it's absolute discretion, without any liability whatsoever.

DUBAI CREEK
HARBOUR

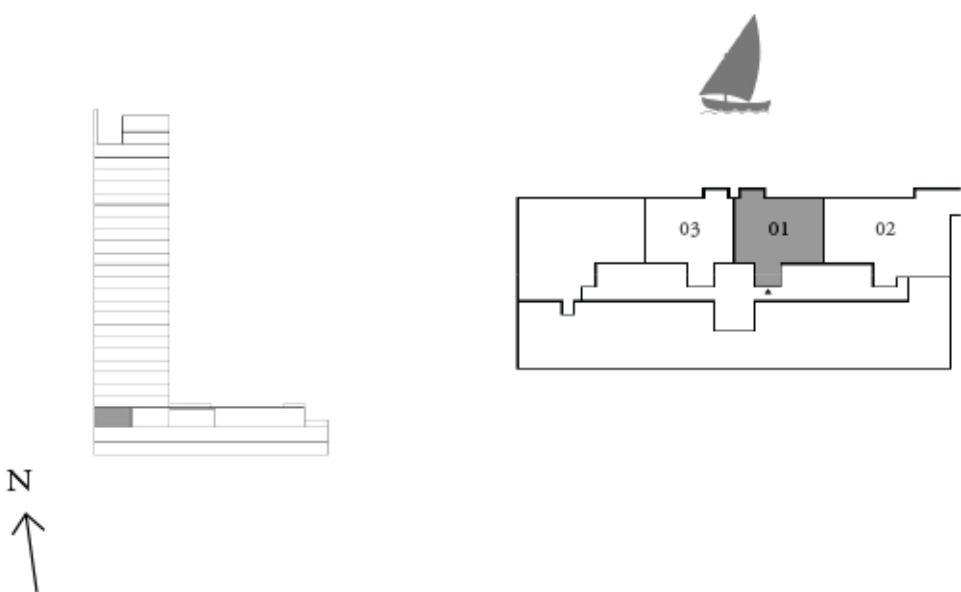
CREEK CRESCENT

APARTMENT

2 BEDROOM

UNIT 01 | LEVEL G

SUITE AREA	1000.07 SQ.FT.	92.91 SQ.M.
BALCONY AREA	57.05 SQ.FT.	5.30 SQ.M.
TOTAL AREA	1057.12 SQ.FT.	98.21 SQ.M.



FOR PLAN 1. All dimensions are in imperial and metric, and measured from finish to finish excluding construction tolerances. 2. All materials, dimensions, and drawings are approximate only. 3. Information is subject to change without notice, at developer's absolute discretion. 4. Actual area may vary from the stated area. 5. Drawings not to scale. 6. All images used are for illustrative purposes only and do not represent the actual size, features, specifications, fittings, and furnishings. 7. The developer reserves the right to make revisions / alterations, at it's absolute discretion, without any liability whatsoever.

DUBAI CREEK
HARBOUR

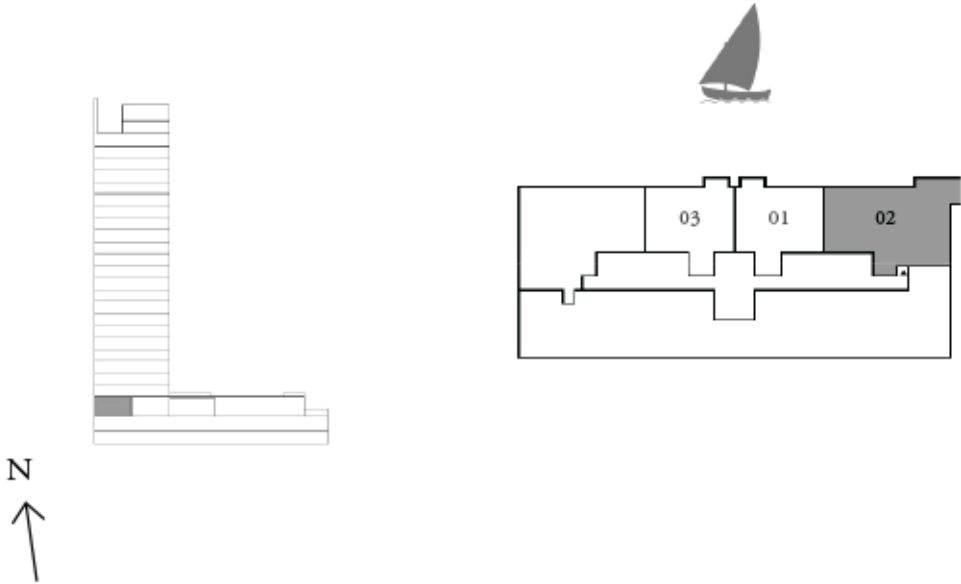
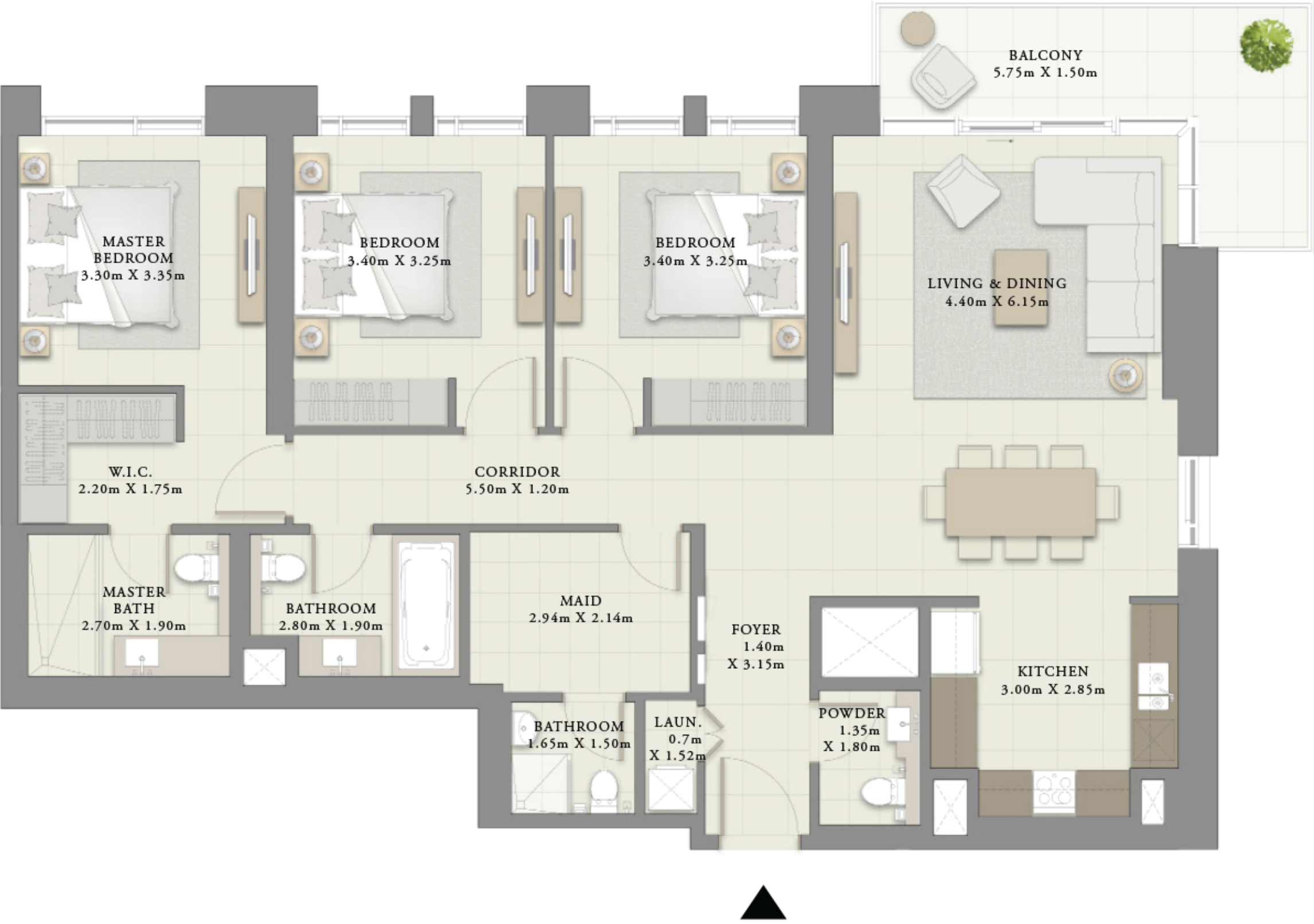
CREEK CRESCENT

APARTMENT

3 BEDROOM

UNIT 02 | LEVEL G

SUITE AREA	1445.49 SQ.FT.	134.29 SQ.M.
BALCONY AREA	131.64 SQ.FT.	12.23 SQ.M.
TOTAL AREA	1577.13 SQ.FT.	146.52 SQ.M.



LOOR PLAN 1. All dimensions are in imperial and metric, and measured from finish to finish excluding construction tolerances. 2. All materials, dimensions, and drawings are approximate only. 3. Information is subject to change without notice, at developer's absolute discretion. 4. Actual area may vary from the stated area. 5. Drawings not to scale. 6. All images used are for illustrative purposes only and do not represent the actual size, features, specifications, fittings, and furnishings. 7. The developer reserves the right to make revisions / alterations, at it's absolute discretion, without any liability whatsoever.

DUBAI CREEK
HARBOUR

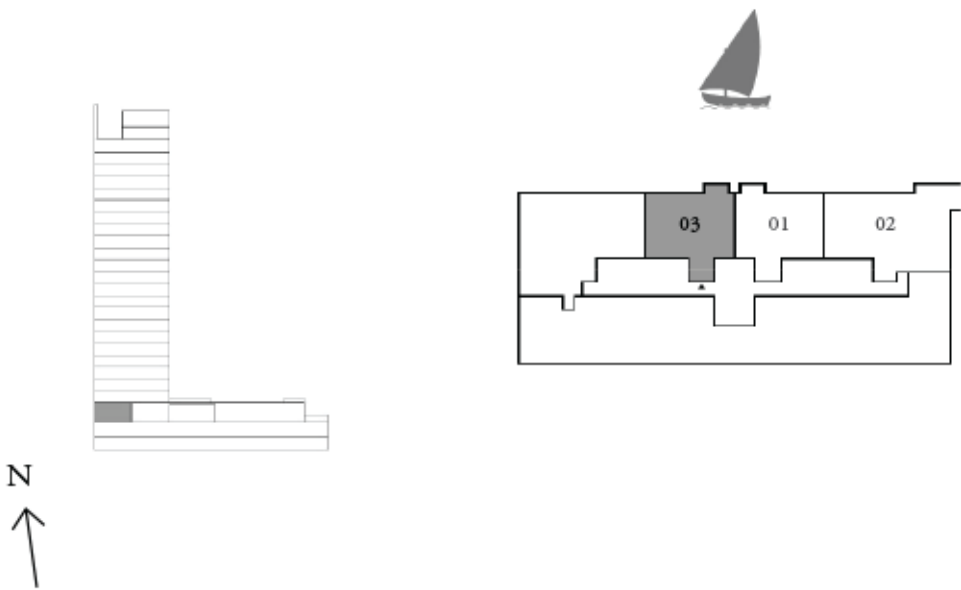
CREEK CRESCENT

APARTMENT

2 BEDROOM

UNIT 03 | LEVEL G

SUITE AREA	1000.07 SQ.FT.	92.91 SQ.M.
BALCONY AREA	57.05 SQ.FT.	5.30 SQ.M.
TOTAL AREA	1057.12 SQ.FT.	98.21 SQ.M.



LOOR PLAN 1. All dimensions are in imperial and metric, and measured from finish to finish excluding construction tolerances. 2. All materials, dimensions, and drawings are approximate only. 3. Information is subject to change without notice, at developer's
olute discretion. 4. Actual area may vary from the stated area. 5. Drawings not to scale. 6. All images used are for illustrative purposes only and do not represent the actual size, features, specifications, fittings, and furnishings. 7. The developer reserves the right
make revisions / alterations, at it's absolute discretion, without any liability whatsoever.

DUBAI CREEK
HARBOUR

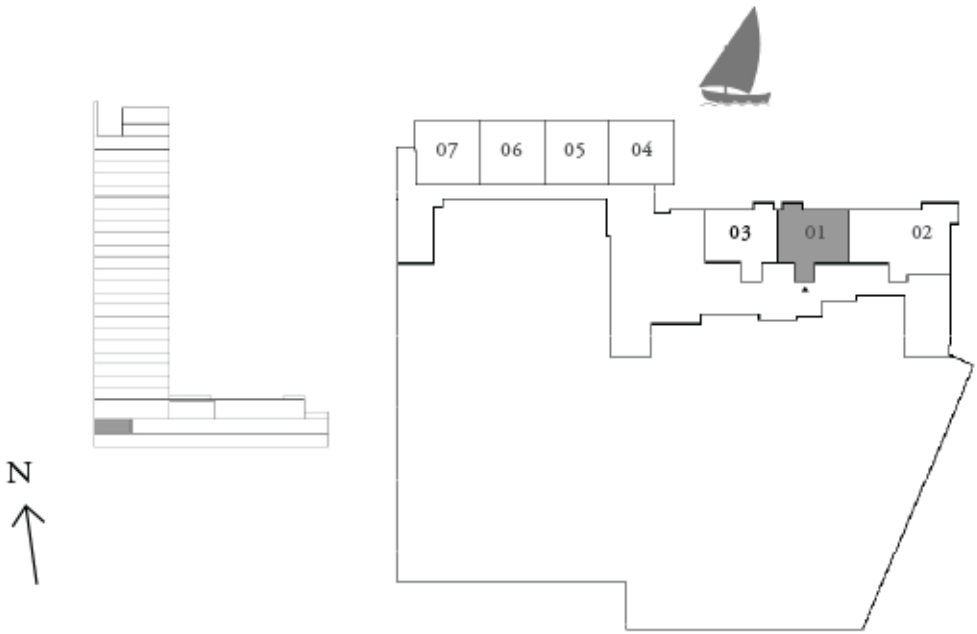
CREEK CRESCENT

APARTMENT

2 BEDROOM

UNIT 01 | LEVEL B1

SUITE AREA	999.75 SQ.FT.	92.88 SQ.M.
BALCONY AREA	57.05 SQ.FT.	5.30 SQ.M.
TOTAL AREA	1056.80 SQ.FT.	98.18 SQ.M.



DOOR PLAN 1. All dimensions are in imperial and metric, and measured from finish to finish excluding construction tolerances. 2. All materials, dimensions, and drawings are approximate only. 3. Information is subject to change without notice, at developer's absolute discretion. 4. Actual area may vary from the stated area. 5. Drawings not to scale. 6. All images used are for illustrative purposes only and do not represent the actual size, features, specifications, fittings, and furnishings. 7. The developer reserves the right to make revisions / alterations, at it's absolute discretion, without any liability whatsoever.

DUBAI CREEK
HARBOUR

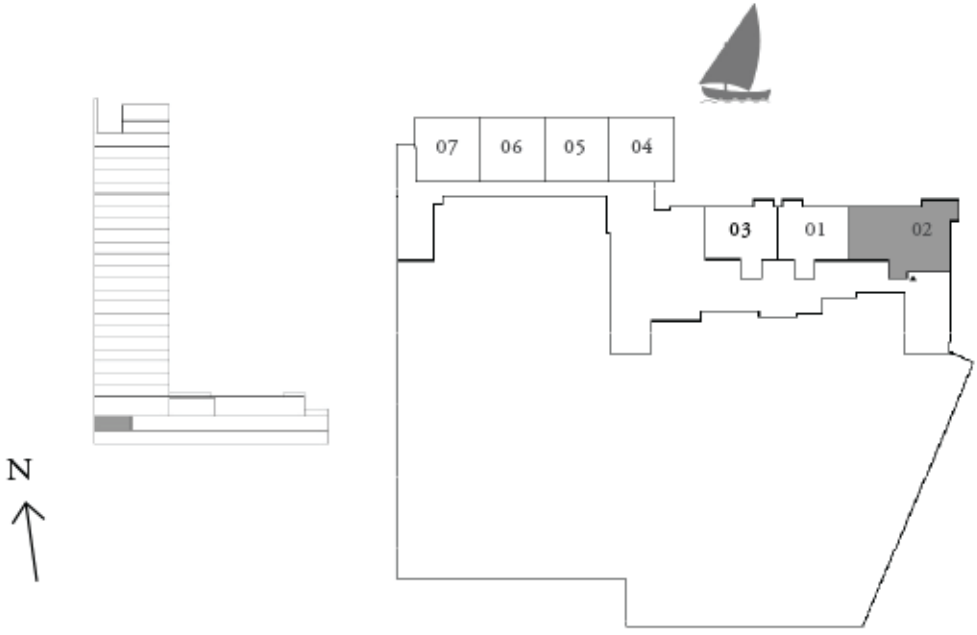
CREEK CRESCENT

APARTMENT

3 BEDROOM

UNIT 02 | LEVEL B1

SUITE AREA	1446.35 SQ.FT.	134.37 SQ.M.
BALCONY AREA	131.64 SQ.FT.	12.23 SQ.M.
TOTAL AREA	1577.99SQ.FT.	146.60 SQ.M.



DOOR PLAN 1. All dimensions are in imperial and metric, and measured from finish to finish excluding construction tolerances. 2. All materials, dimensions, and drawings are approximate only. 3. Information is subject to change without notice, at developer's absolute discretion. 4. Actual area may vary from the stated area. 5. Drawings not to scale. 6. All images used are for illustrative purposes only and do not represent the actual size, features, specifications, fittings, and furnishings. 7. The developer reserves the right to make revisions / alterations, at it's absolute discretion, without any liability whatsoever.

DUBAI CREEK
HARBOUR

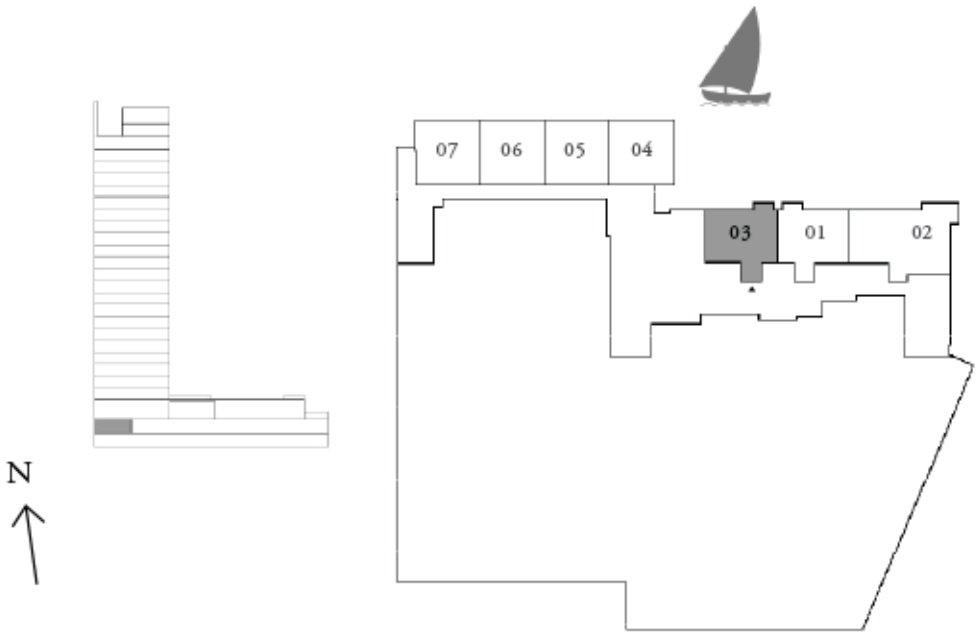
CREEK CRESCENT

APARTMENT

2 BEDROOM

UNIT 03 | LEVEL B1

SUITE AREA	999.75 SQ.FT.	92.88 SQ.M.
BALCONY AREA	57.05 SQ.FT.	5.30 SQ.M.
TOTAL AREA	1056.80 SQ.FT.	98.18 SQ.M.



DOOR PLAN 1. All dimensions are in imperial and metric, and measured from finish to finish excluding construction tolerances. 2. All materials, dimensions, and drawings are approximate only. 3. Information is subject to change without notice, at developer's absolute discretion. 4. Actual area may vary from the stated area. 5. Drawings not to scale. 6. All images used are for illustrative purposes only and do not represent the actual size, features, specifications, fittings, and furnishings. 7. The developer reserves the right to make revisions / alterations, at it's absolute discretion, without any liability whatsoever.

DUBAI CREEK
HARBOUR

CREEK CRESCENT

TOWNHOUSE

3 BEDROOM

UNIT 04 | LEVEL B1

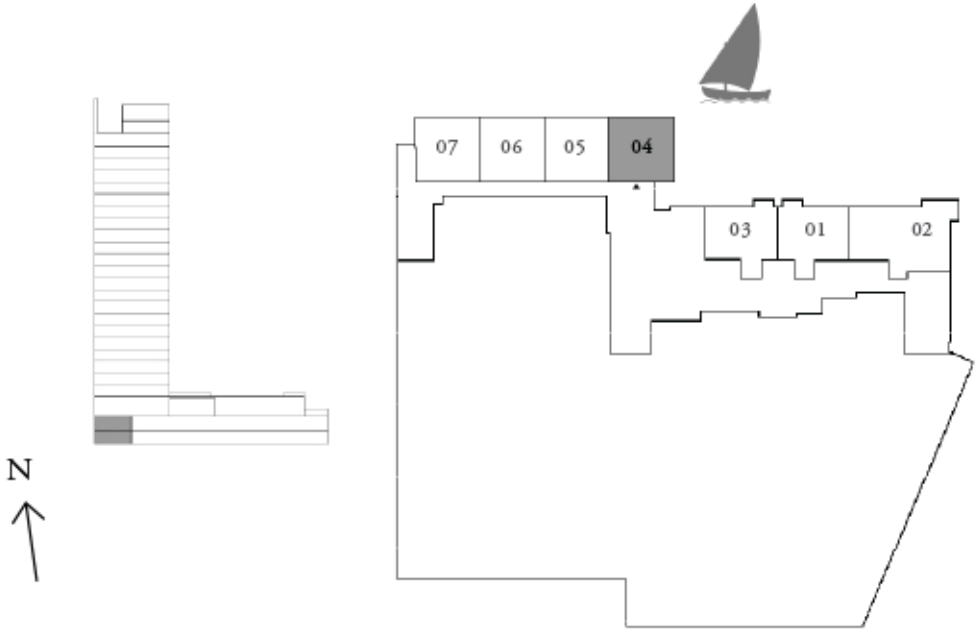
SUITE AREA	1619.00 SQ.FT.	150.41 SQ.M.
BALCONY AREA	541.42 SQ.FT.	50.30 SQ.M.
TOTAL AREA	2160.42 SQ.FT.	200.71 SQ.M.



BASEMENT 01



BASEMENT 02



FOR PLAN 1. All dimensions are in imperial and metric, and measured from finish to finish excluding construction tolerances. 2. All materials, dimensions, and drawings are approximate only. 3. Information is subject to change without notice, at developer's absolute discretion. 4. Actual area may vary from the stated area. 5. Drawings not to scale. 6. All images used are for illustrative purposes only and do not represent the actual size, features, specifications, fittings, and furnishings. 7. The developer reserves the right to make revisions / alterations, at its absolute discretion, without any liability whatsoever.

DUBAI CREEK
HARBOUR

CREEK CRESCENT

TOWNHOUSE

3 BEDROOM

UNIT 05 | LEVEL B1

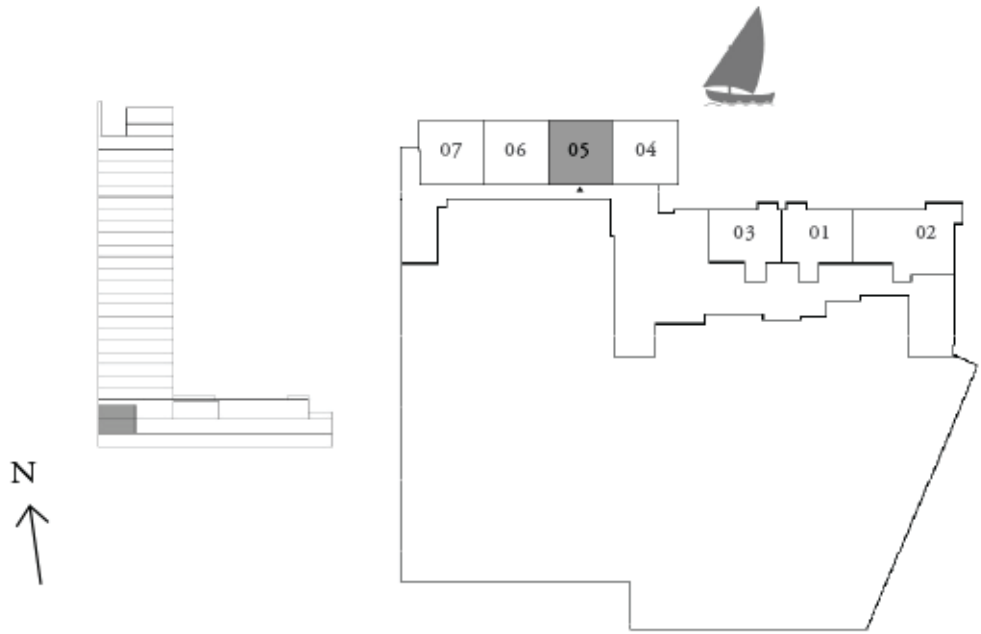
SUITE AREA	1617.28 SQ.FT.	150.25 SQ.M.
BALCONY AREA	491.70 SQ.FT.	45.68 SQ.M.
TOTAL AREA	2108.98 SQ.FT.	195.93 SQ.M.



BASEMENT 01



GROUND FLOOR



LOOR PLAN 1. All dimensions are in imperial and metric, and measured from finish to finish excluding construction tolerances. 2. All materials, dimensions, and drawings are approximate only. 3. Information is subject to change without notice, at developer's absolute discretion. 4. Actual area may vary from the stated area. 5. Drawings not to scale. 6. All images used are for illustrative purposes only and do not represent the actual size, features, specifications, fittings, and furnishings. 7. The developer reserves the right to make revisions / alterations, at it's absolute discretion, without any liability whatsoever.

DUBAI CREEK
HARBOUR

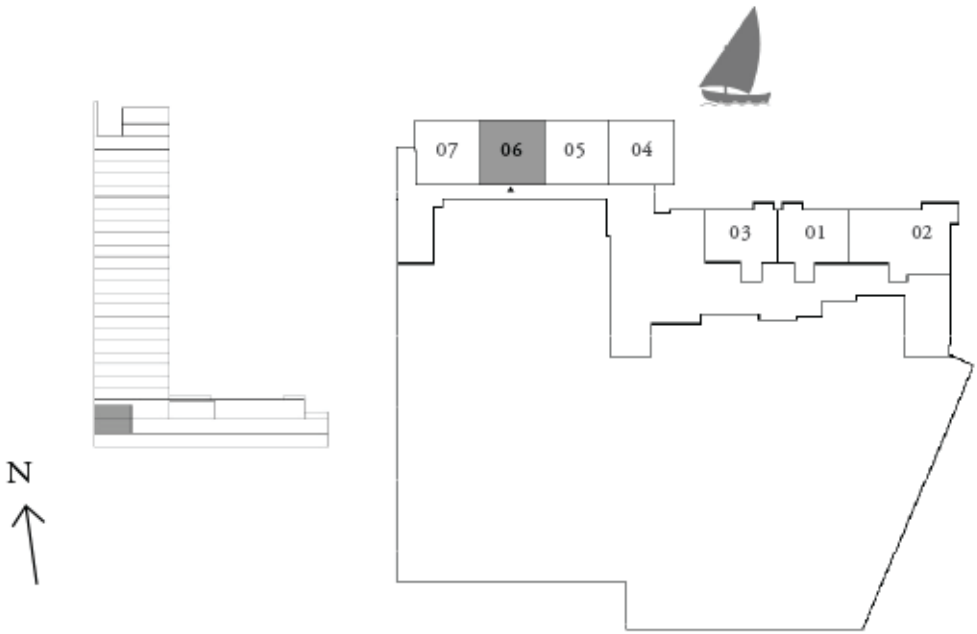
CREEK CRESCENT

TOWNHOUSE

3 BEDROOM

UNIT 06 | LEVEL B1

SUITE AREA	1616.20 SQ.FT.	150.15 SQ.M.
BALCONY AREA	491.70 SQ.FT.	45.68 SQ.M.
TOTAL AREA	2107.90 SQ.FT.	195.83 SQ.M.



BASEMENT 01



GROUND FLOOR

LOOR PLAN 1. All dimensions are in imperial and metric, and measured from finish to finish excluding construction tolerances. 2. All materials, dimensions, and drawings are approximate only. 3. Information is subject to change without notice, at developer's absolute discretion. 4. Actual area may vary from the stated area. 5. Drawings not to scale. 6. All images used are for illustrative purposes only and do not represent the actual size, features, specifications, fittings, and furnishings. 7. The developer reserves the right to make revisions / alterations, at it's absolute discretion, without any liability whatsoever.

DUBAI CREEK
HARBOUR

CREEK CRESCENT

TOWNHOUSE

3 BEDROOM

UNIT 07 | LEVEL B1

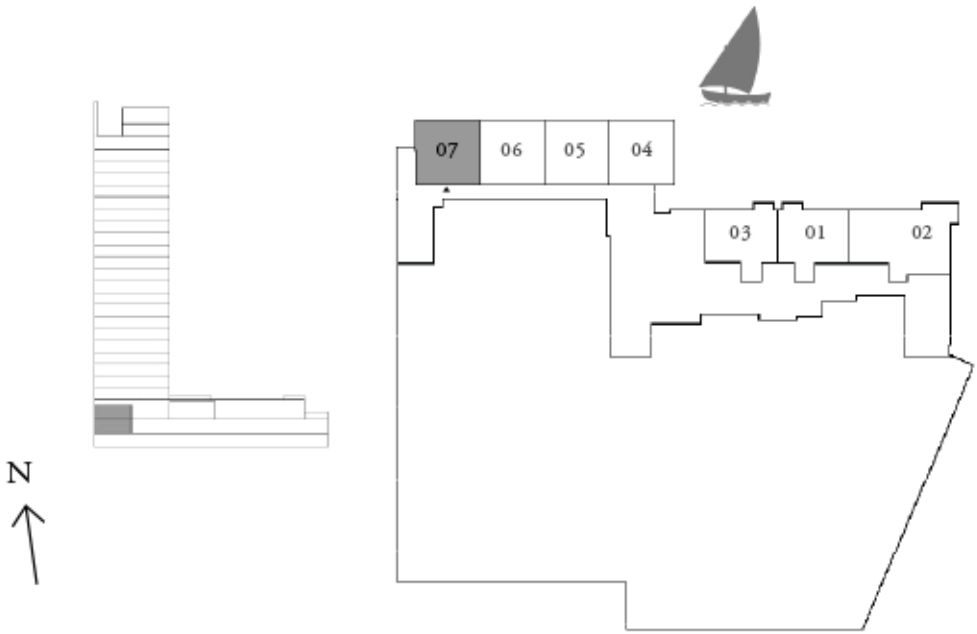
SUITE AREA	1616.31 SQ.FT.	150.16 SQ.M.
BALCONY AREA	490.51 SQ.FT.	45.57 SQ.M.
TOTAL AREA	2106.82 SQ.FT.	195.73 SQ.M.



BASEMENT 01



GROUND FLOOR



LOOR PLAN 1. All dimensions are in imperial and metric, and measured from finish to finish excluding construction tolerances. 2. All materials, dimensions, and drawings are approximate only. 3. Information is subject to change without notice, at developer's absolute discretion. 4. Actual area may vary from the stated area. 5. Drawings not to scale. 6. All images used are for illustrative purposes only and do not represent the actual size, features, specifications, fittings, and furnishings. 7. The developer reserves the right to make revisions / alterations, at it's absolute discretion, without any liability whatsoever.

DUBAI CREEK
HARBOUR

CREEK CRESCENT

APARTMENT

2 BEDROOM

UNIT 01 | LEVEL B2

SUITE AREA	999.75 SQ.FT.	92.88 SQ.M.
BALCONY AREA	420.33 SQ.FT.	39.05 SQ.M.
TOTAL AREA	1420.08 SQ.FT.	131.93 SQ.M.



DUBAI CREEK
HARBOUR

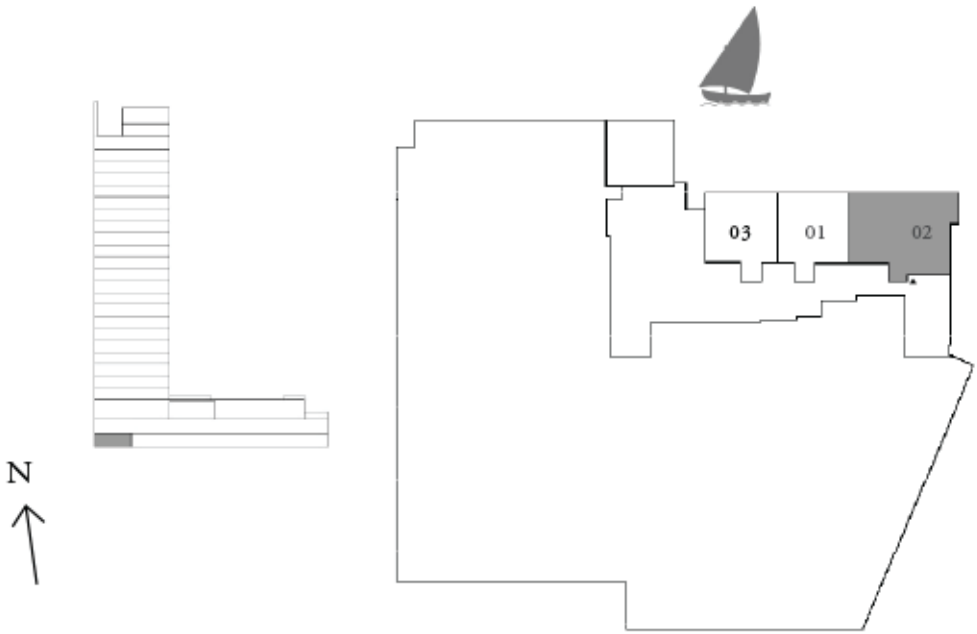
CREEK CRESCENT

APARTMENT

3 BEDROOM

UNIT 02 | LEVEL B2

SUITE AREA	1446.35 SQ.FT.	134.37 SQ.M.
BALCONY AREA	669.19 SQ.FT.	62.17 SQ.M.
TOTAL AREA	2115.54 SQ.FT.	196.54 SQ.M.



DOOR PLAN 1. All dimensions are in imperial and metric, and measured from finish to finish excluding construction tolerances. 2. All materials, dimensions, and drawings are approximate only. 3. Information is subject to change without notice, at developer's absolute discretion. 4. Actual area may vary from the stated area. 5. Drawings not to scale. 6. All images used are for illustrative purposes only and do not represent the actual size, features, specifications, fittings, and furnishings. 7. The developer reserves the right to make revisions / alterations, at it's absolute discretion, without any liability whatsoever.

DUBAI CREEK
HARBOUR

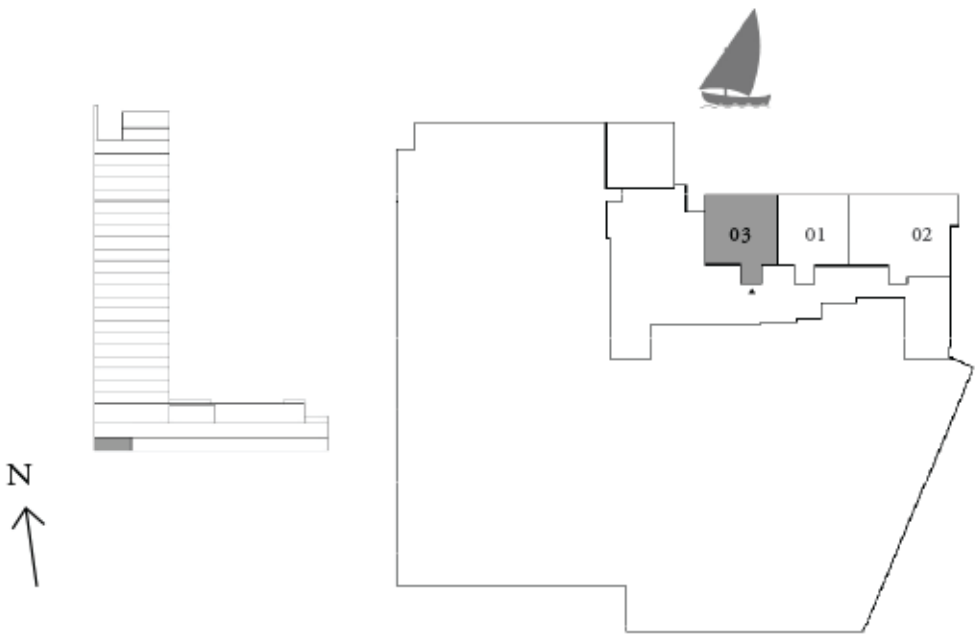
CREEK CRESCENT

APARTMENT

2 BEDROOM

UNIT 03 | LEVEL B2

SUITE AREA	999.75 SQ.FT.	92.88 SQ.M.
BALCONY AREA	395.47 SQ.FT.	36.74 SQ.M.
TOTAL AREA	1395.22 SQ.FT.	129.62 SQ.M.



FOR PLAN 1. All dimensions are in imperial and metric, and measured from finish to finish excluding construction tolerances. 2. All materials, dimensions, and drawings are approximate only. 3. Information is subject to change without notice, at developer's absolute discretion. 4. Actual area may vary from the stated area. 5. Drawings not to scale. 6. All images used are for illustrative purposes only and do not represent the actual size, features, specifications, fittings, and furnishings. 7. The developer reserves the right to make revisions / alterations, at its absolute discretion, without any liability whatsoever.

DUBAI CREEK HARBOUR

CREEK CRESCENT

FOR MORE INFORMATION PLEASE CONTACT



☎ +971 55 476 7630
☎ +971 4 368 7878
✉ info@afsrealestate.com
🌐 www.afsrealestate.com



☎ +971 50 674 2020
☎ +971 4 368 7878
✉ info@dubricks.com
🌐 www.dubricks.com

EMAAR